

Microsoft Windows NAS

1. NAS

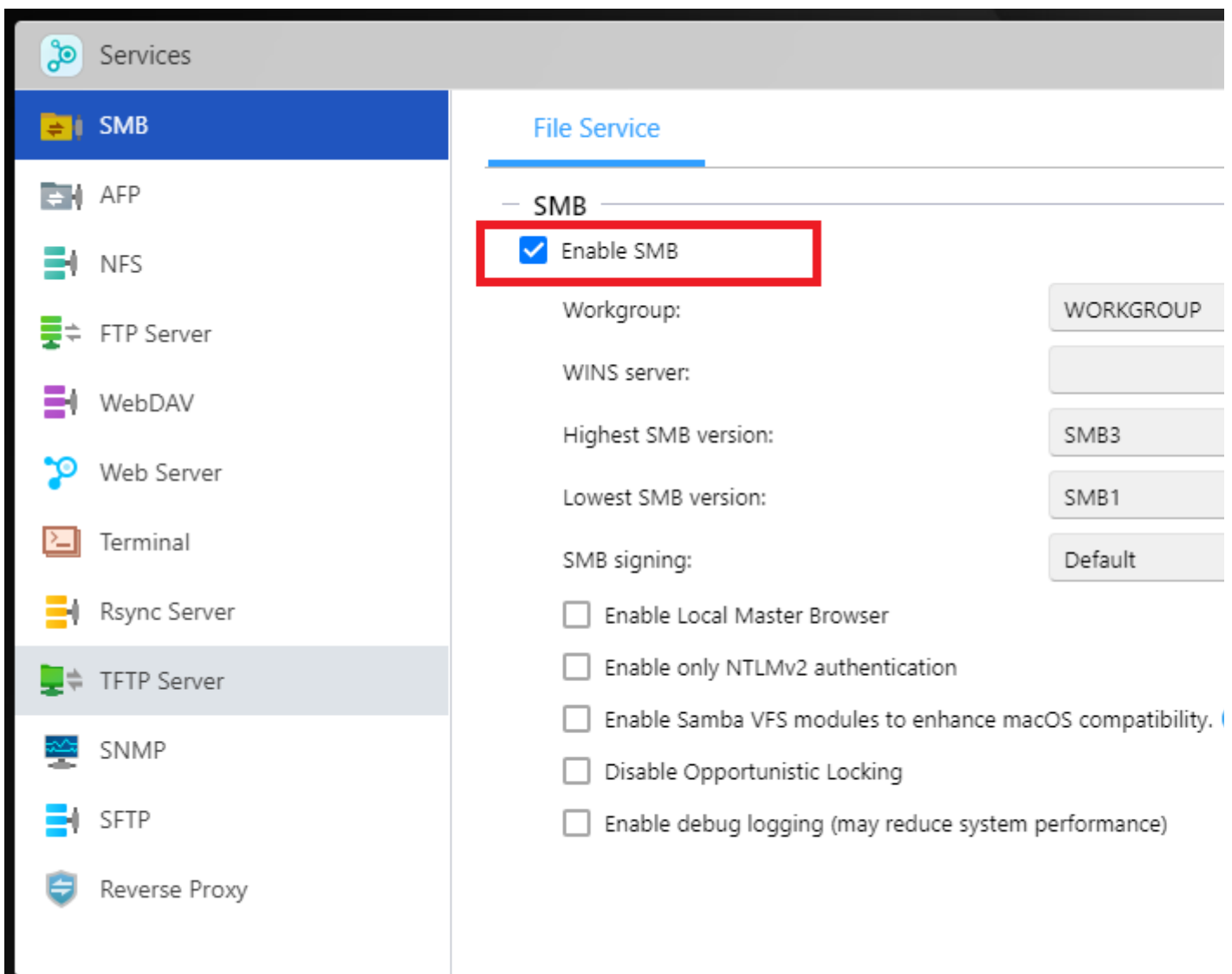
1.1 Windows (CIFS/SMB)

1

a. ADM

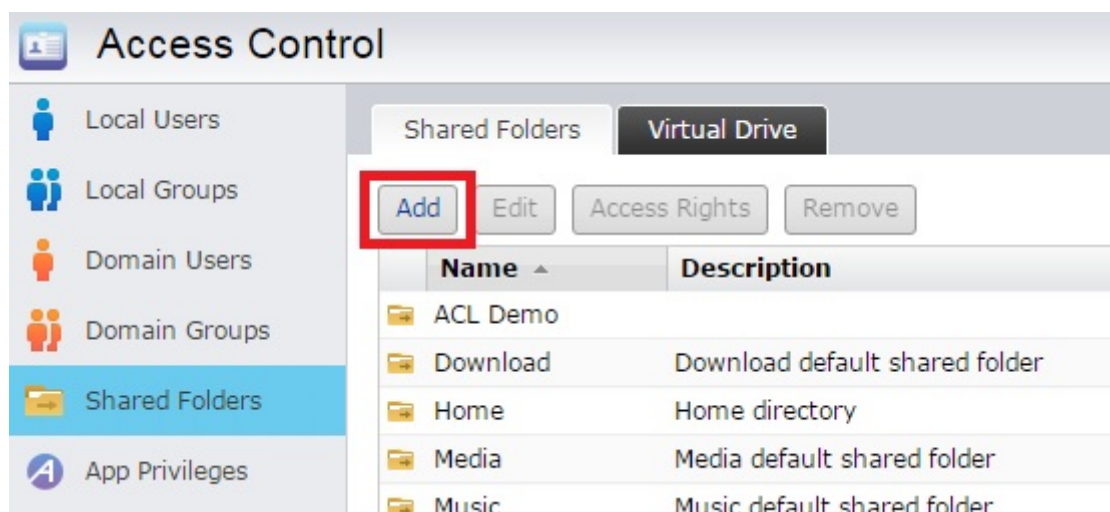
b. [] ->[SMB]

c. [SMB] []



a. [] -> []

b. []



1.2

1

[[NAS

MyNAS)

Add New Shared Folder ve

Please fill out the following:

Name:

Description:

Disk volume:

☐ Invisible in "Network" or "My Network Places"

☐ Enable Network Recycle Bin

☒ Only accessible by administrator group users

☐ Encrypt this shared folder

2

”) [] (”

Add New Shared Folder

Please set the access rights for this shared folder:

☐ Read & Write for all users

☒ Read Only for all users, Read & Write for administrators

☐ By user

☐ By group

Privileges for anonymous FTP/WebDAV:

☐ Enable Windows ACL ⓘ

3

[]

Add New Shared Folder ^{ve}

Please confirm the following settings:

Name	Value
Name	MyNAS
Description	
Disk volume	Volume 1
Invisible in "Network" or "My...	No
Encryption	No
Enable Network Recycle Bin	No
Only accessible by administra...	Yes
Anonymous FTP/WebDAV	Deny Access
Permission Mode	Traditional

Previous

Finish

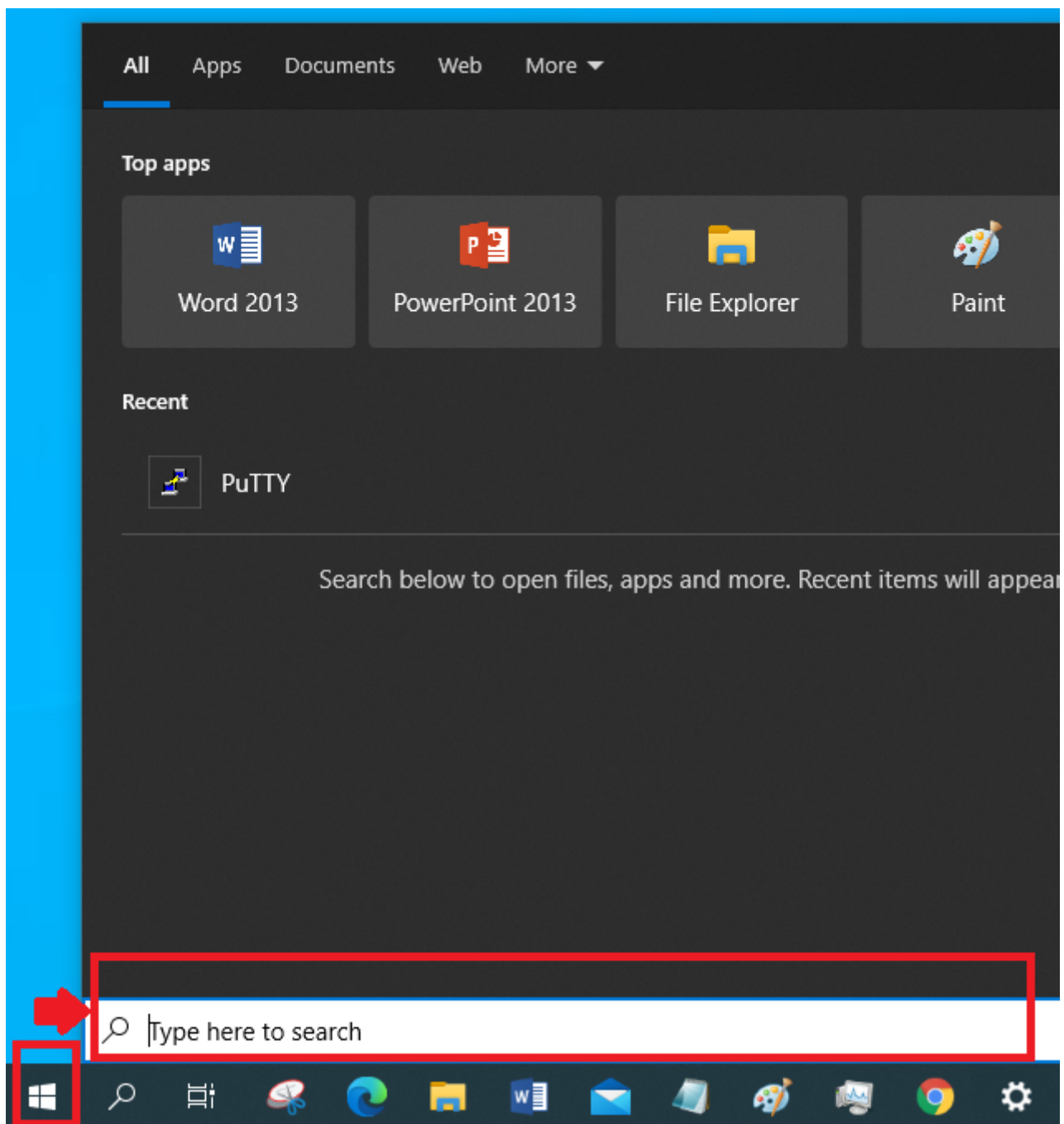
Cancel

2.Windows

2.1

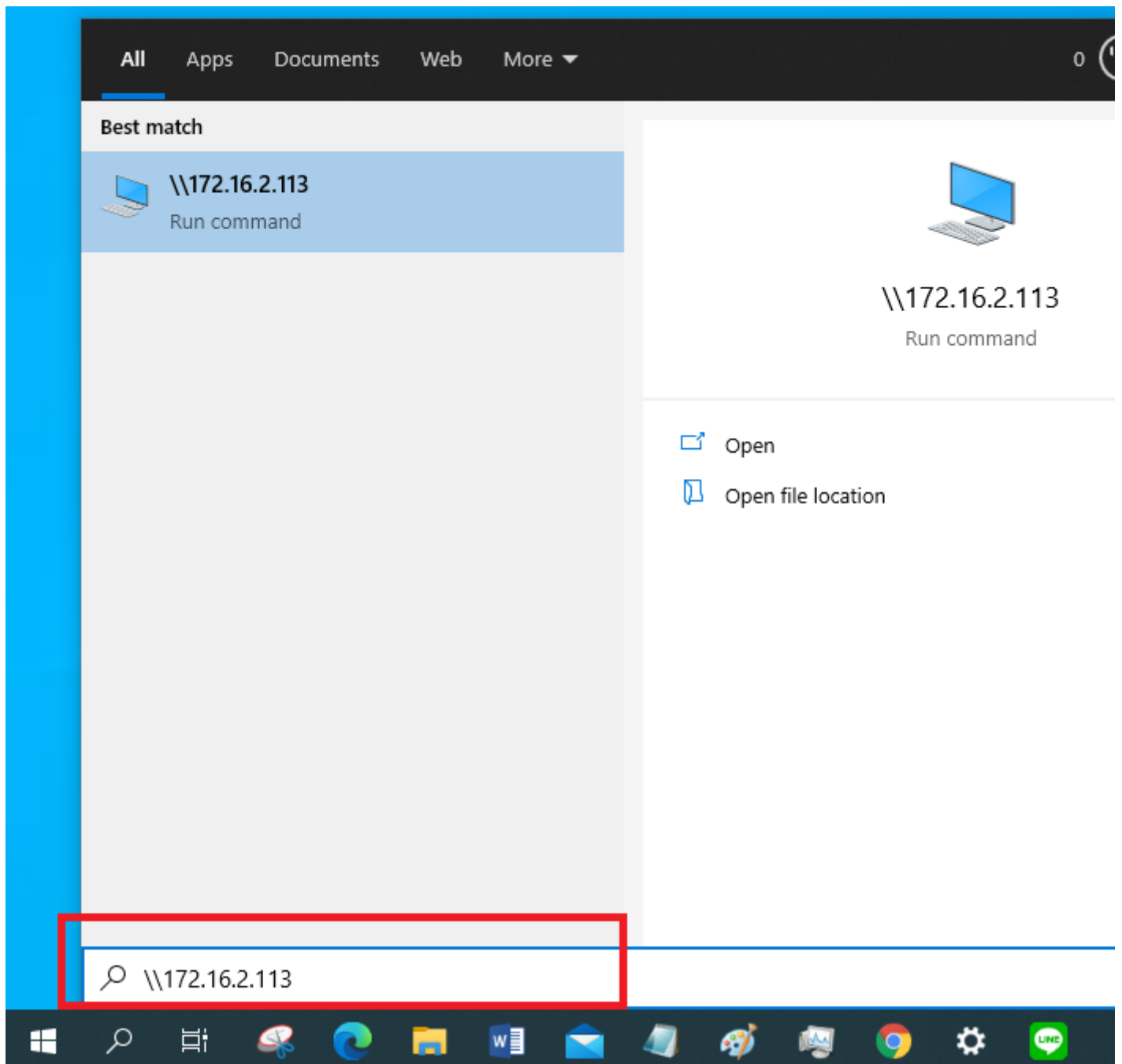
1 Windows 10)

Windows [] []



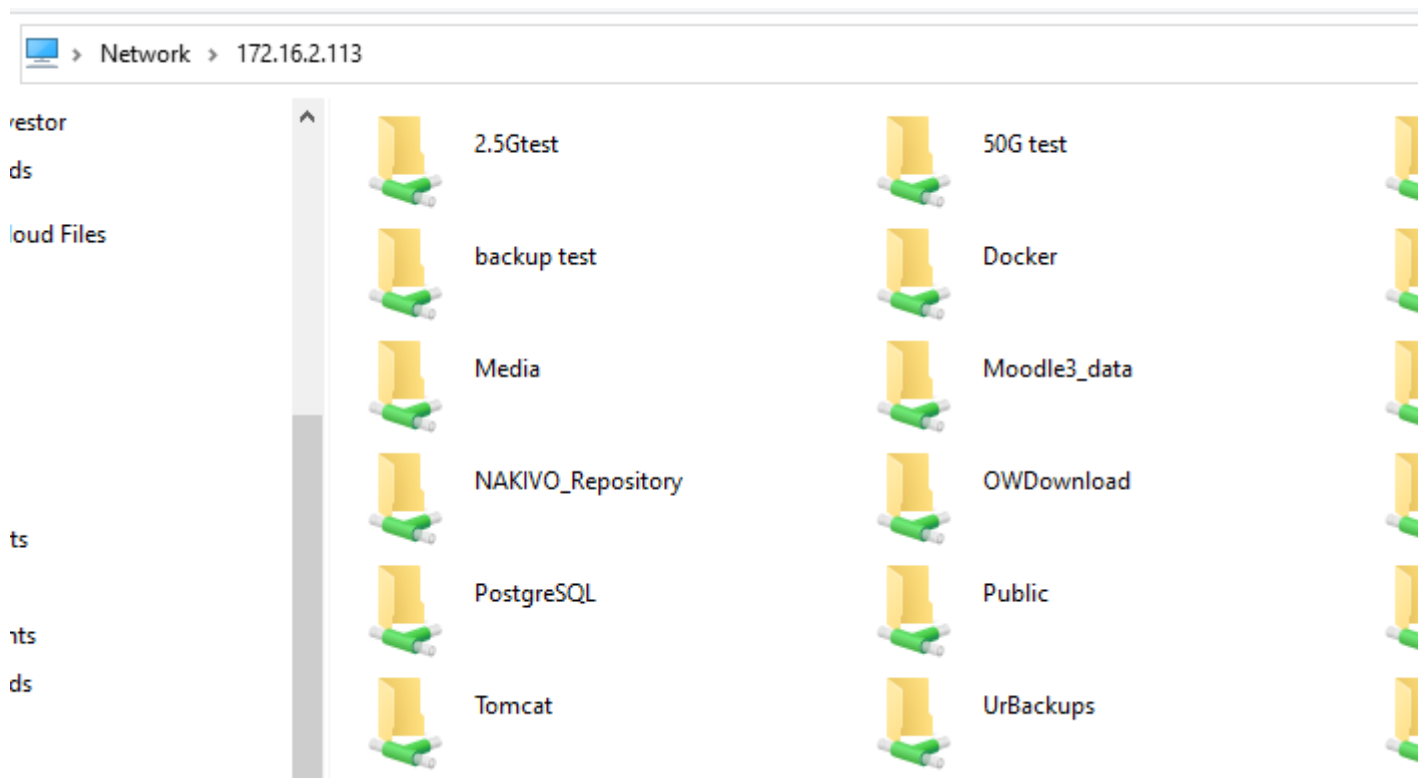
2

[] [Enter] NAS IP NAS IP 172.16.2.113)



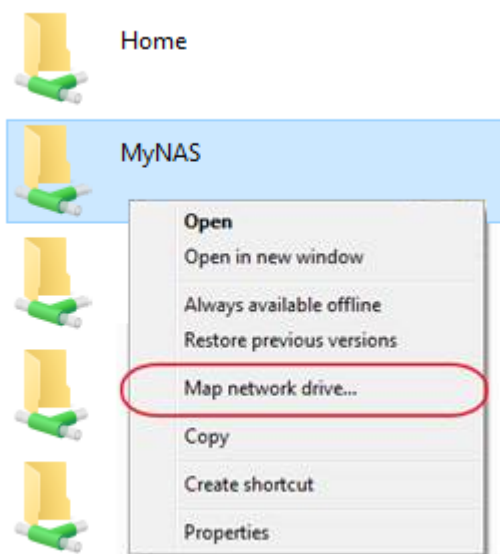
3

Windows CIFS/SAMBA NAS (1.1 Windows) NAS (



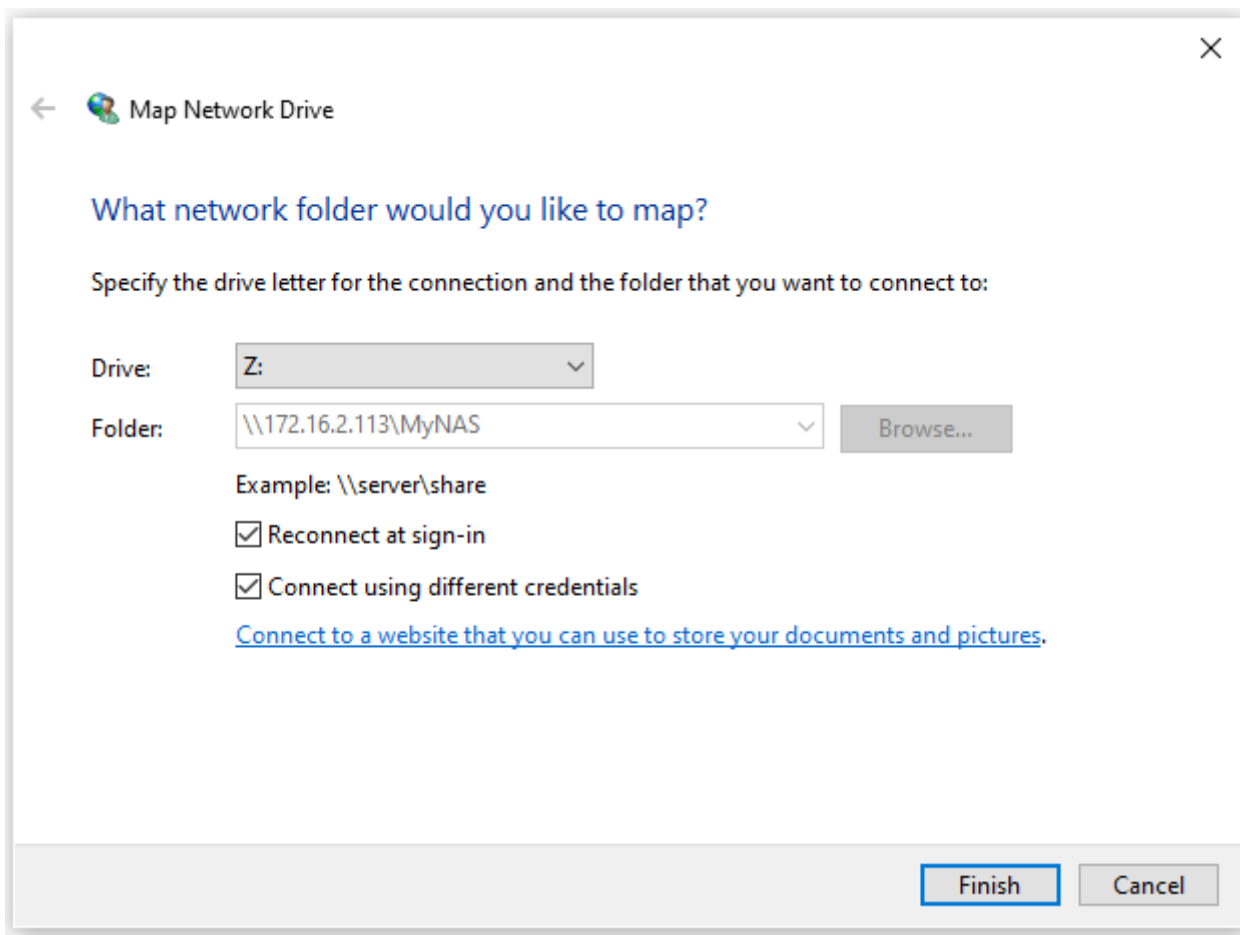
4

MyNAS)



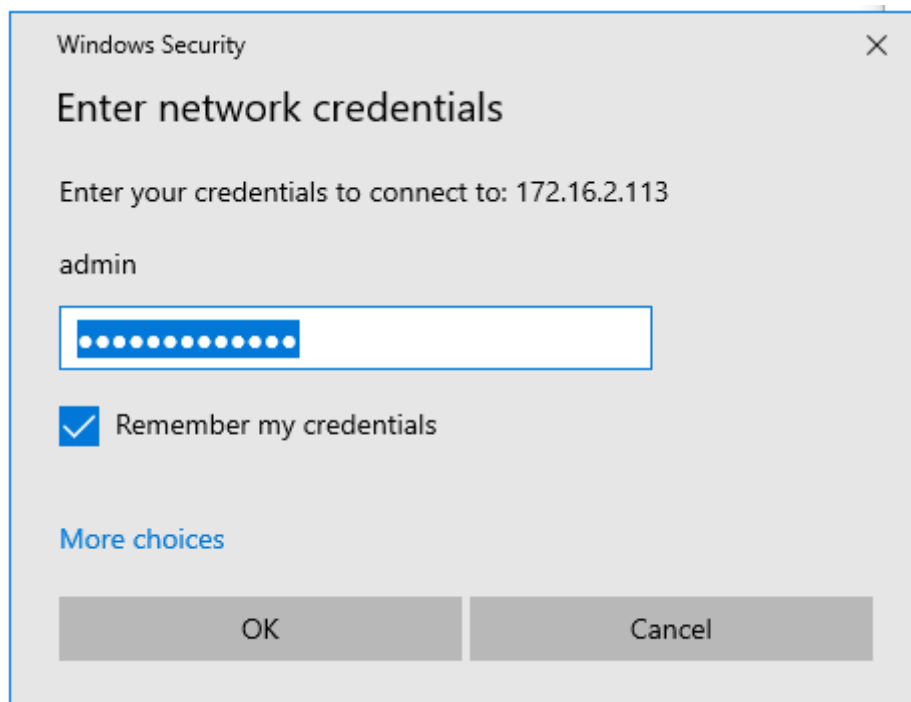
5

MyNAS)

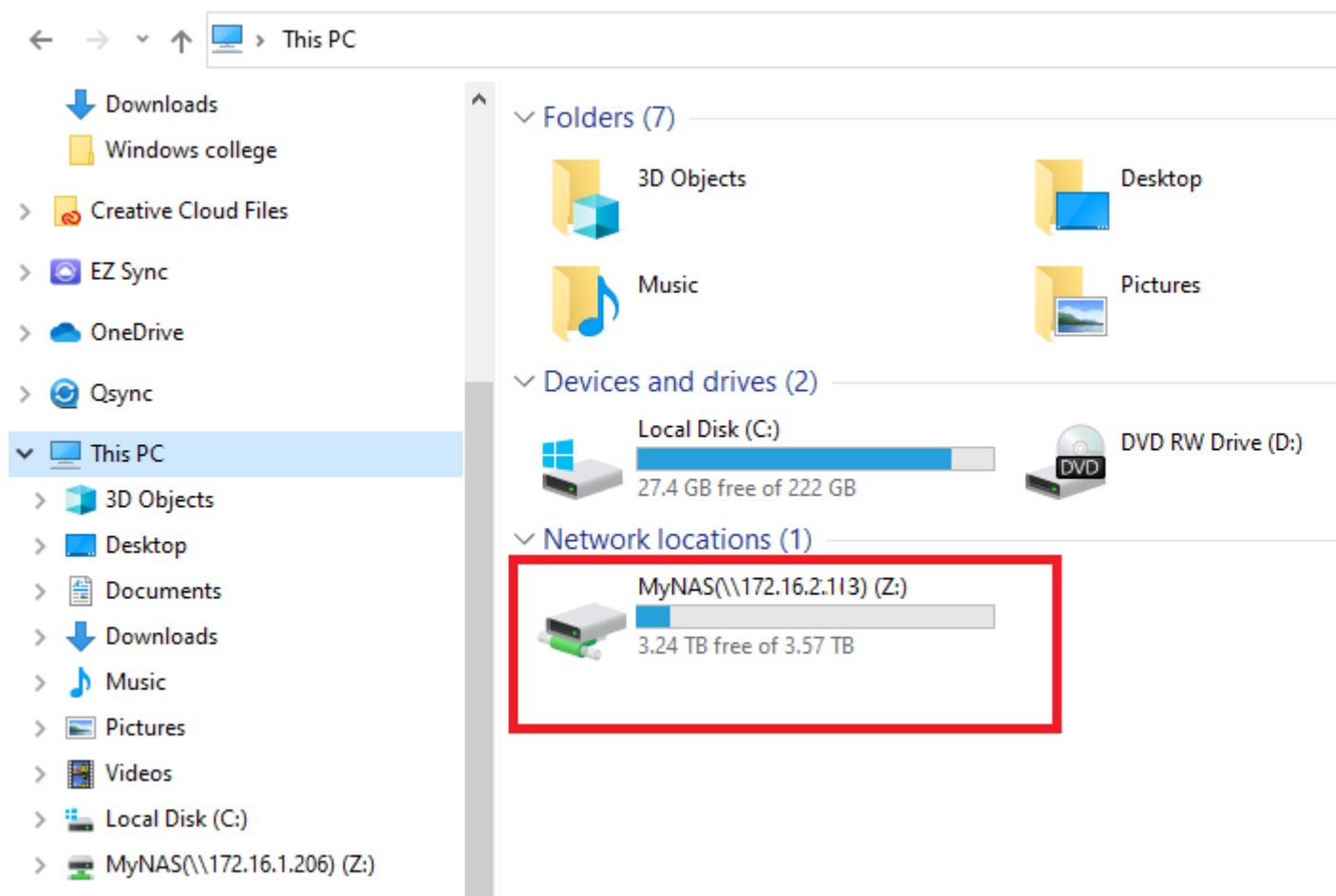


6

\\NAS



7



Revision #1

Created 9 March 2022 03:36:31 by

Updated 9 July 2022 19:11:06 by